

ELENCO DEGLI ELEMENTI ASSEMBLATI		
Sigla	Descrizione	Componenti
E1	Trave R 1 dx	P1+T1+P9+5S4
E2	Trave R 3 dx	P9+T5+3S4
E3	Trave R 2 dx	P9+T3+4S4
E4	Trave R 4 sx	P9+T8+P3+6S3
E5	Pilastrò compresso dx	P7+C1+P5
E6	Pilastrò compresso sx	P8+C1+P6
E7	Pilastrò teso sx	P7+C2+P5
E8	Pilastrò teso dx	P8+C2+P6
E9	Trave R 1 sx	P9+T2+P2+5S3
E10	Trave R 3 sx	P9+T6+3S3
E11	Trave R 2 sx	P9+T4+4S3
E12	Trave R 4 dx	P9+T7+P4+6S4

N.B tutte le misure sono espresse in
millimetri



Università degli studi di
Catania
Corso di laurea in Ingegneria
edile–architettura

Corso di Tecnica delle costruzioni

Anno accademico 2016/2017

Docenti: prof. ing. E. Marino, prof. ing. M.
Bosco

Progetto di un edificio per civile abitazione
in cemento armato con scala in acciaio

●Tavola 6: Scala (Tavola di officina 2)

Materiali utilizzati
– Calcestruzzo
C25/30

– Acciaio B450C
– Acciaio S235

Studenti

Nunzio Marco Aiello
058000229

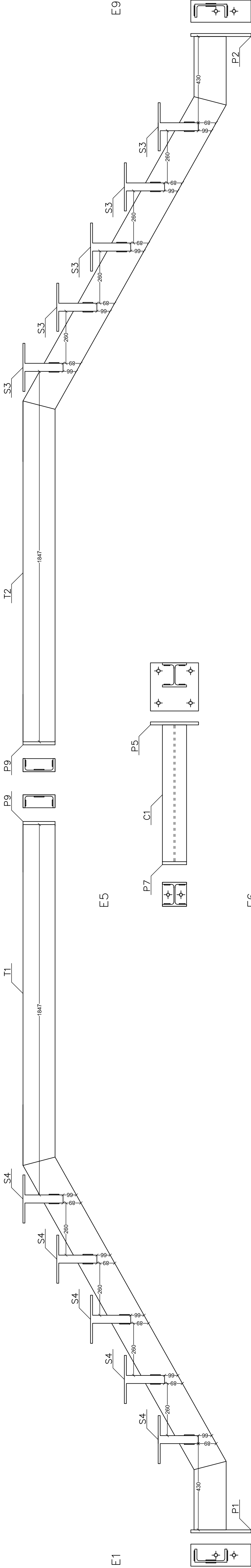
Federica Grasso 058000258

Jon Ibarretxe (Erasmus)

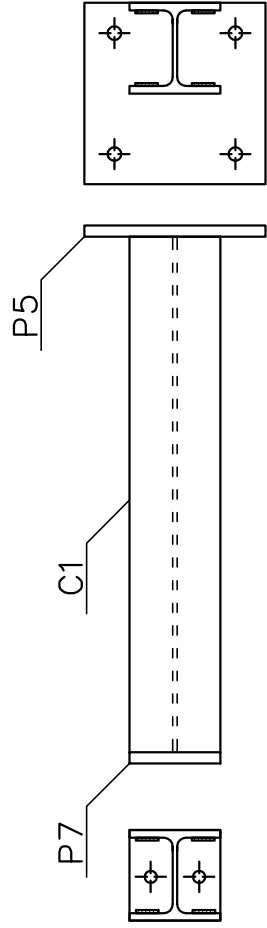
Revisori

William Leni

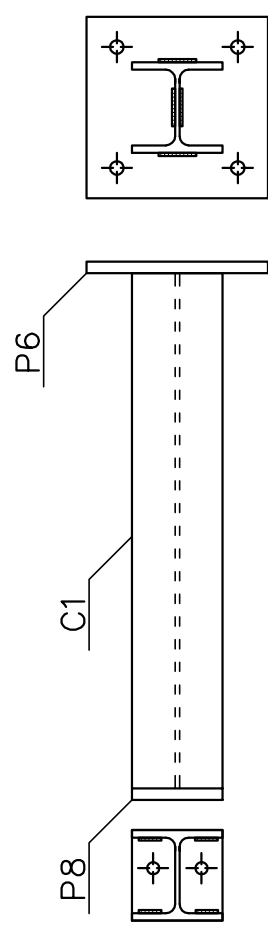
Aurelio Gherzi



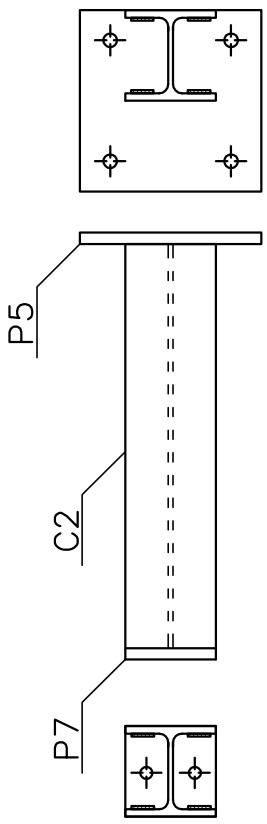
E5



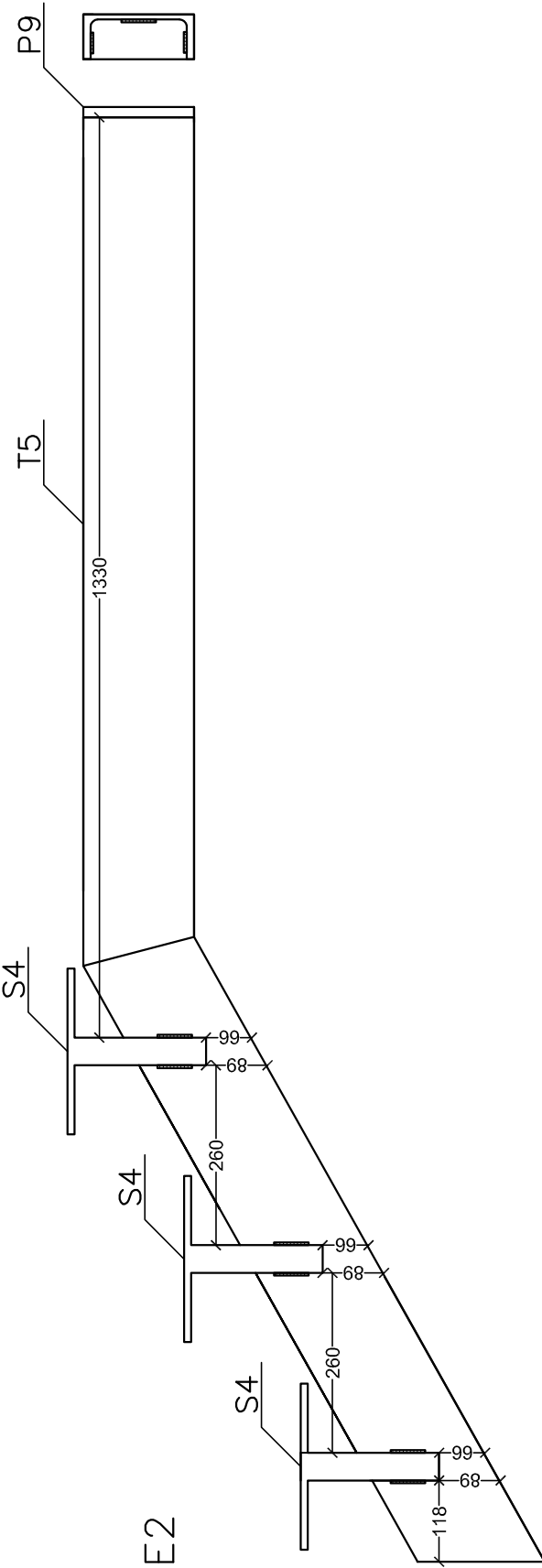
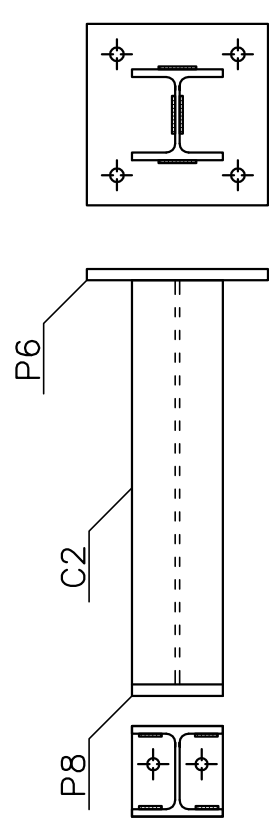
E6



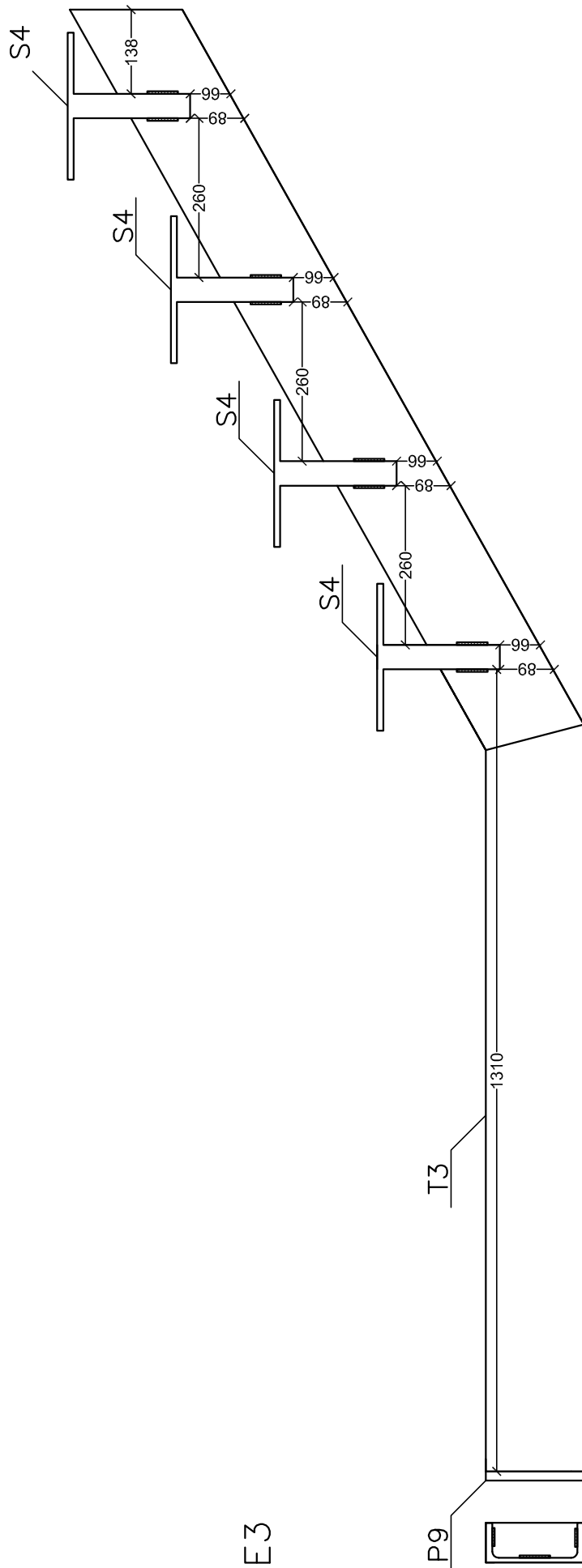
E7



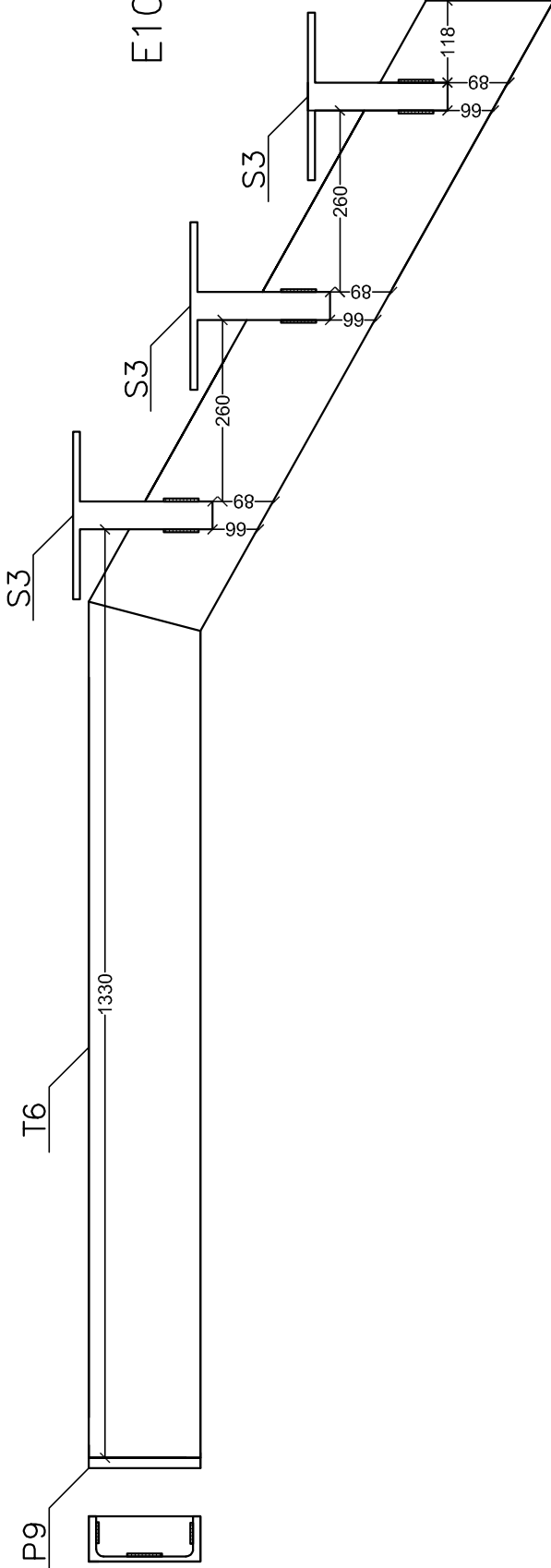
E8



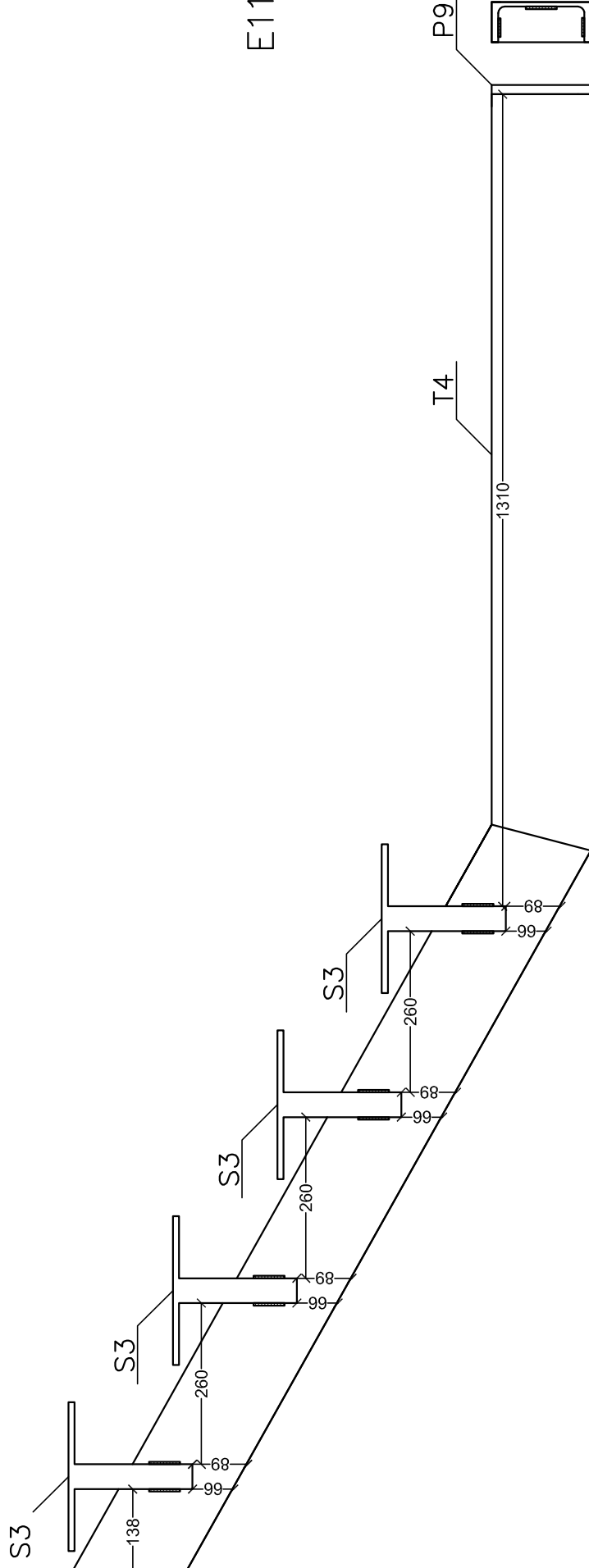
E2



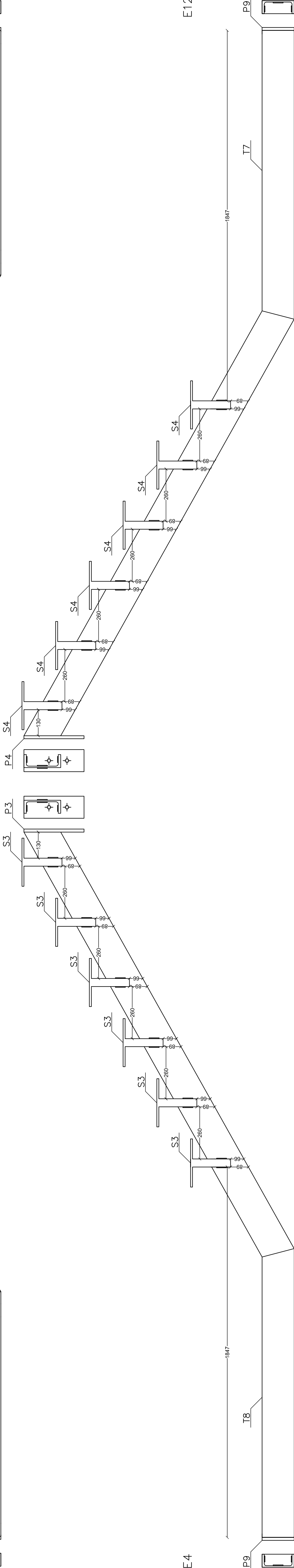
E3



E7



E11



E4

E12